

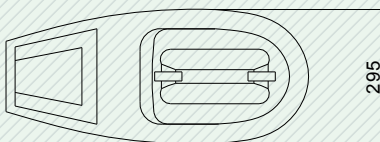
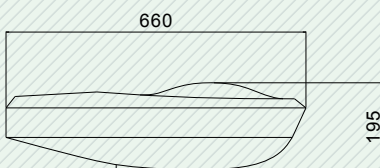
SD-J-LD9

85W



FEATURES

- Corrosion resistant aluminium housing
- High temperature resistant tempered glass lens
- Anodised aluminium reflector



SUPPORTED LAMPS

- 85 watt square



APPLICATIONS

Street lighting, housing estates, parks and gardens etc...

Luminaire No	Lamp No	Wattage (W)	Psu Frequency (Hz)	Input Voltage (V)	Input Current (A)	Ingress Protection
SD-J-LD9-85W	SD85W-F-G	85W	50/60	240	0.40	IP65(ballast case)

"Creating Energy Saving Solutions for a Sustainable Future"